

MASTER
COPY

AMF

Harley-Davidson

*Printed by
Universal Litho*

**PARTS CATALOG
SUPPLEMENT**

1979

Gasoline Golf Car/Utilicar

1963 to

USE THIS SUPPLEMENT WITH CATALOG NO. 99448-77

ISSUED: DECEMBER 1978

No. 99448-79

PART
NO.

N A M E

U S E D O N

CYLINDER AND PISTON - PAGE 2 G1

- 4319 BOLT, stabilizer bracket, 3/8-24 x 1 hex. hd. (2) (Peerless axle) Late 77 - D, D4
- 7775 LOCKNUT, stabilizer bracket, 3/8-24 x 7/16 x 9/16 hex. (2)
(Peerless axle) Late 77 - D, D4
- 16232-70 CLAMP, stabilizer axle tube bracket (Dana axle) Late 70 to * - D, DC, D4
- 16241-70 AXLE TUBE BRACKET, stabilizer (Dana axle) Late 70 to * - D, DC, D4
- 16241-77 AXLE TUBE BRACKET, stabilizer (Peerless axle) Late 77 - D, D4

CRANKSHAFT - PAGE 5 G2

- 6642 THRUST WASHER, connecting rod (2) Late 77 to * - D, D4
- 23703-67A CRANKSHAFT ASSEMBLY, with pin, rod & bearing 67 to Early 71 - D;
69 to Early 71 - DC
- 23703-71B CRANKSHAFT ASSEMBLY, with pin, rod & bearing Late 71 to * - D, DC, D4
- 23707-78 CRANKSHAFT, circuit breaker side (use with 6642) 65 to * - D, DF, DC, D4 (Above
Serial No. 65D-1429)
- 23708-67 CRANKSHAFT (Replaced by 23718-67)
- 23708-78 CRANKSHAFT, transmission side (use with 6642) Late 71 to * - D, DC, D4
- 23718-67 CRANKSHAFT, transmission side (use with 6642) 67 to Early 71 - D;
69 to Early 71 - DC

TRANSMISSION PRIMARY DRIVE - PAGE 9 G4

- 36369-77 SEAL KIT, primary drive 72 to * - D, D4
Consists of:
11108 O-RING
11109 O-RING
11117 O-RING
23747-71B LOCKWASHER
34865-63 PLUG
36467-61 FELT SEAL

TRANSMISSION SECONDARY DRIVE - PAGE 11 G5

- 4331 SHOULDER BOLT, flange hub, 5/16-24 x 2-7/16 hex. hd. (4) Late 77 to * - D, D4
- 11010 RETAINING RING 63 to 65 - D (Below
Serial No. 65D-1429); 68 to 70 - D;
69 & 70 - DC; Late 77 to * - D, D4
- 36400-71B TRANSMISSION SECONDARY DRIVE, complete Late 77 to * - D, D4
- 36403-67C STATIONARY FLANGE (Replaced by 36404-71)
- 36404-71 STATIONARY FLANGE 67 to * - D; 69 to * - DC, D4
- 36410-71B FLANGE HUB, less retaining ring (long) 71 to * - DC, DC, D4'
- 36415-77 FLANGE HUB, less retaining ring (short) Late 77 - D, D4

CIRCUIT BREAKER AND FAN HOUSING - PAGE 13 G9
1967 AND LATER - D- 1969 - DC

- 1302 SCREW, No. 10-24 x 5/8 Pozidriv fil. hd. (4) 67 to * - D; 69 to * - DC, D4
- 1304 SCREW (Replaced by 1302)

NOTE: Asterisk (*) indicates part is used for latest model year shown on cover.

PART
NO.

N A M E

U S E D O N

STARTER-GENERATOR - 1977 & LATER - PAGE 15 G10

29949-69 BELT ADJUSTMENT BRACKET KIT..... 77 to * - D, D4
Consists of:
4734 BOLT, 5/16-18 x 1-1/4 hex. washer hd.
4735 BOLT, 5/16-18 x 1-3/4 hex. washer hd.
5445W CARRIAGE BOLT, 5/16-18 x 1-1/4
8161 LOCKNUT, 5/16-18 x 7/16 x 1/2 hex. (3)
8162 LOCKNUT, 1/4-28 x 3/8 x 7/16 hex.
8997 BUSHING (2)
29941-79 STRAP, starter-generator
31476-79 BRACKET, starter-generator

STARTER-GENERATOR - 1969 TO 1976 - PAGE 17 G10A
D (ABOVE SERIAL NO. 69 D-1911)
DC (ABOVE SERIAL NO. 69 DC-1037)

29949-69 BELT ADJUSTMENT BRACKET KIT..... Late 69 to 76 - D, DC, D4
Consists of:
4734 BOLT, 5/16-18 x 1-1/4 hex. washer hd.
4735 BOLT, 5/16-18 x 1-3/4 hex. washer hd.
5445W CARRIAGE BOLT, 5/16-18 x 1-1/4
8161 LOCKNUT, 5/16-18 x 7/16 x 1/2 hex. (3)
8162 LOCKNUT, 1/4-28 x 25/64 x 7/16 hex.
8997 BUSHING (2)
29941-79 STRAP, starter-generator
31476-79 BRACKET, starter-generator
37084-41 SPRING WASHER, generator-starter mounting (2) (quantity correction). Late 69 to 76 - D, DC, D4

SPARK COIL, CABLE AND CONDENSER - PAGE 21 G11

10011 STRAP, spark plug cable..... 79 to * - D, D4
31981-65B SPARK PLUG CABLE, 16 in..... 75 to * - D, D4
32309-69 SPARK PLUG, No. 5-6 (use with high compression cylinder head
16649-67B)..... 71 to * - DC; Late 71 to * - D, D4
(Above 3B-13000-H1)
75009-78 CONDENSER (Canada radio interference requirement)..... Late 78 to * - D, D4

CARBURETOR - PAGE 23 G12

27258-67 CHOKE CONTROL CABLE ASSEMBLY (used on correction)..... 67 to * - D
27259-69 CHOKE CONTROL CABLE ASSEMBLY (used on correction)..... 69 to * - DC, D4
27703-55 GASKET, main orifice plug..... 63 to * - D, DF, DC, D4

REED VALVE AND AIR CLEANER - PAGE 27 G13

26903-63 REED PLATE (used on correction)..... 63 to 70 - D, DF, DC, D4
40511-78 CLAMP, throttle control cable..... Late 78 to * - D, D4

ACCELERATOR PEDAL - PAGE 31 G15

7740 LOCKNUT, accelerator bracket, 5/16-18 x 1/4 x 1/2 hex. (2)..... 76 to * - D, D4

BRAKE PEDAL - DISC BRAKE - PAGE 33 G15A

25785-30A BUSHING, brake pedal lever - lower (2)..... 63 to * - D, DC, D4
42482-63 BUSHING, brake lever - upper..... 63 to * - D, DF, D4;
63 to 68 - DC

NOTE: Asterisk (*) indicates part is used for latest model year shown on cover.

PART
NO.

N A M E

U S E D O N

STEERING TILLER - 1973 & EARLIER - PAGE 51 G21

57025-63B TILLER BAR (Replaced by 57026-67)
57026-67 TILLER BAR ASSEMBLY..... 63 to 73 - D, DF, DC

STEERING TILLER - 1974 & LATER - PAGE 53 G21-1

57025-63B TILLER BAR (Replaced by 57026-67)
57026-67 TILLER BAR ASSEMBLY..... 74 to * - D
57204-74 SPACER (2) (quantity correction)..... 74 to * - D

**FRONT HOUSING, INSTRUMENT PANEL,
FLOOR BOARDS & BEVERAGE HOLDER - D4 - PAGE 57 G22A**

50230-79 FRONT HOUSING..... 79 to * - D4
50260-79 FORK HOUSING..... 79 to * - D, D4
53244-72B INSTRUMENT PANEL, with studs (w/o gas gauge hole)..... 72 to * - D4
53246-72A INSTRUCTION DECAL, instrument panel..... 72 to 78 - D4

FORK HOUSING, SHIELDS, ACCESSORY PANEL AND CARRY-ALL - PAGE 59 G22

33214-67C INSTRUCTION PLATE..... 67 to * - D
50528-67 FLOOR MAT, right shield & floorboard..... 67 to * - D; 69 to 72 - DC
50529-67A FLOOR MAT, left shield & floorboard..... 67 to * - D; 69 to 72 - DC
50535-73 FLOOR MAT (1 piece) (Replaced by 50528-67 & 50529-67A)

FRAME AND REAR SUSPENSION - PAGE 60 G23

3945 BOLT, shock absorber - lower, 3/8-24 x 2-1/4 hex. hd. (Peerless axle) Late 77 - D, D4
4333 BOLT, bumper plate, 3/8-24 x 5 hex. hd. (4) (Peerless axle)..... Late 77 - D, D4
4733 SCREW, shock bracket to axle housing, 5/16-18 x 1 Torx. hd..... 78 to * - D, D4
6314W WASHER, shock bracket, 5/16 x 9/16 x 1/8..... 78 to * - D, D4
6416 WASHER, shock absorber - lower, 3/8 x 1 x 5/64 (Peerless axle).... Late 77 - D, D4
6607W WASHER, bumper plate, 3/8 x 29/32 x 5/32 (4) (Peerless axle)..... Late 77 - D, D4
7775 LOCKNUT, shock absorber - lower, 3/8-24 x 7/16 x 9/16 hex.
(Peerless axle)..... Late 77 - D; D4
24794-67 SPACER, shock absorber - lower (Peerless axle)..... Late 77 - D, D4
50514-67B FLOOR PANEL (Replaced by 50514-70)
50514-70 FLOOR PANEL, left..... 67 to * - D; 69 to 72 - DC
54524-73 LOWER BRACKET, shock absorber (Dana)..... Late 73 to Early 77; 78 to * - D, D4
54524-77 BRACKET, shock absorber (Peerless)..... Late 77 - D, D4
85213-42A SHOULDER BOLT, shock absorber (Dana - 2) (Peerless - upper).... 66 to * - D, DC, D4

SEAT, HANDRAIL AND BEVERAGE HOLDER - PAGE 67 G24

52134-72A COVER, seat bottom cushion..... 72 to * - D, D4
52135-72A COVER, seat back cushion..... 72 to * - D, D4

BODY - D, DF, D4 - PAGE 69 G27

50346-79 REINFORCEMENT STRAP, body (2)..... 79 to * - D, D4
61300-75 BODY ASSEMBLY..... 79 to * - D, D4
50257-79 INSULATION PAD..... 79 to * - D, D4

NOTE: Asterisk (*) indicates part is used for latest model year shown on cover.

PART
NO.

N A M E

U S E D O N

WINDSHIELD - NEW STYLE - PAGE 73 G32A

2339	BOLT, bracket, No. 10-24 x 3/4 hex. hd. (4)	77 to * - D4
6716	WASHER, bracket, No. 10 x 1/2 x 3/64	77 to * - D4
7624	LOCKNUT, bracket, No. 10-24 x 1/4 x 3/8 hex. (4)	77 to * - D4
8212	POP RIVET (4) (quantity correction)	74 to * - D, D4
8528W	POP RIVET, garment box clip (3); retainer (3) (quantity correction)	74 to * - D, D4
58044-74	RETAINER (3) (quantity correction)	74 to * - D, D4

EXHAUST SYSTEM - PAGE 75 G33

65231-67C	MUFFLER (Replaced by 65231-78)	
65231-78	MUFFLER	69 & 70 - DC; 67 to * - D, D4

FUEL TANK - 1975 & LATER - PAGE 79 G34A

2541	SCREW, fuel tank door hinge, No. 8-18 x 3/8 self tapping ctsk. Pozidriv flat hd. (3)	79 to * - D, D4
8141	SPEED NUT, gas tank door hinge screw (3)	79 to * - D, D4
61301-79	DOOR, fuel tank filler	79 to * - D, D4
61529-79	LOOP PAD, fuel tank filler door (2)	79 to * - D, D4
61528-79	HOOK PAD, fuel tank filler door (2)	79 to * - D, D4
61810-79	HINGE, fuel tank door	79 to * - D, D4

BATTERY - PAGE 81 G35

6300	WASHER, battery hold-down bracket, 5/16 x 7/16 x 1/32	75 to Early 76 - D, D4
6703	WASHER, battery hold-down bracket, 1/4 x 5/8 x 1/16	75 to Early 76 - D, D4
66019-75A	BATTERY, dry charged	75 to * - D, D4

WIRING - PAGE 91 G39A

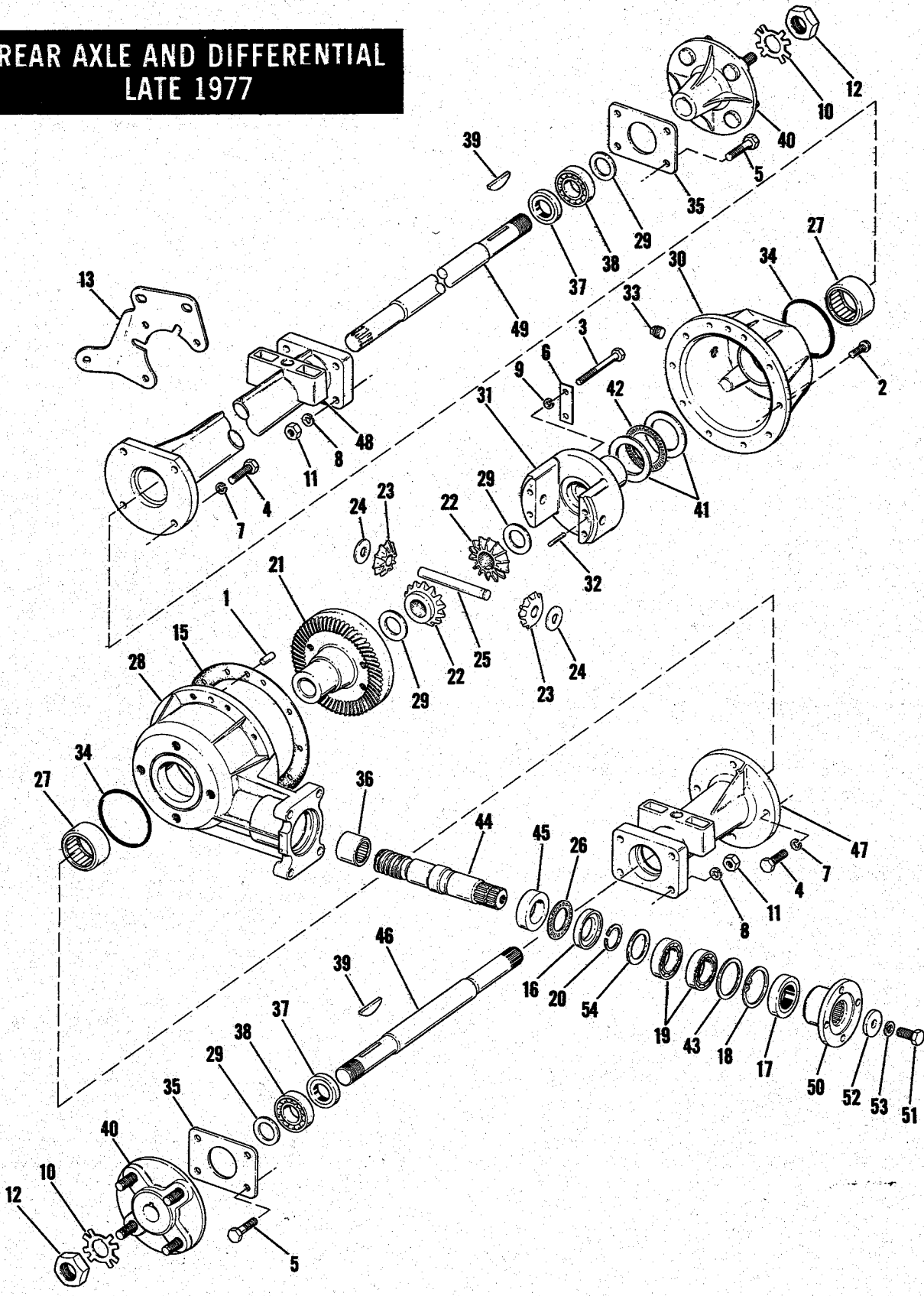
70026-72	CABLE, reversing switch	69 to Early 72 - D
----------	-------------------------	--------------------

SWITCHES - PAGE 93 G40

2645W	SCREW, with external tooth l.w., 5/16-18 x 1/2 self tapping slotted hex. hd. (4) (name correction)	71 to * - D, DC, D4
70951-79	PLATE, choke and ignition switch on/off	79 to * - D, D4
71470-63D	SOLENOID SWITCH	67 to * - D; 69 to * - DC, D4
71580-75	SOLENOID SWITCH (Replaced by 71470-63D)	
74509-76	VOLTAGE REGULATOR (Hitachi)	Late 76 to * - D, D4
74511-65	VOLTAGE REGULATOR (Bosch)	Late 68 to Early 76 - D, D4 (Above Serial No. 6660); 69 to 72 - DC

NOTE: Asterisk (*) indicates part is used for latest model year shown on cover.

REAR AXLE AND DIFFERENTIAL LATE 1977



G43B

INDEX PART
NO. NO.

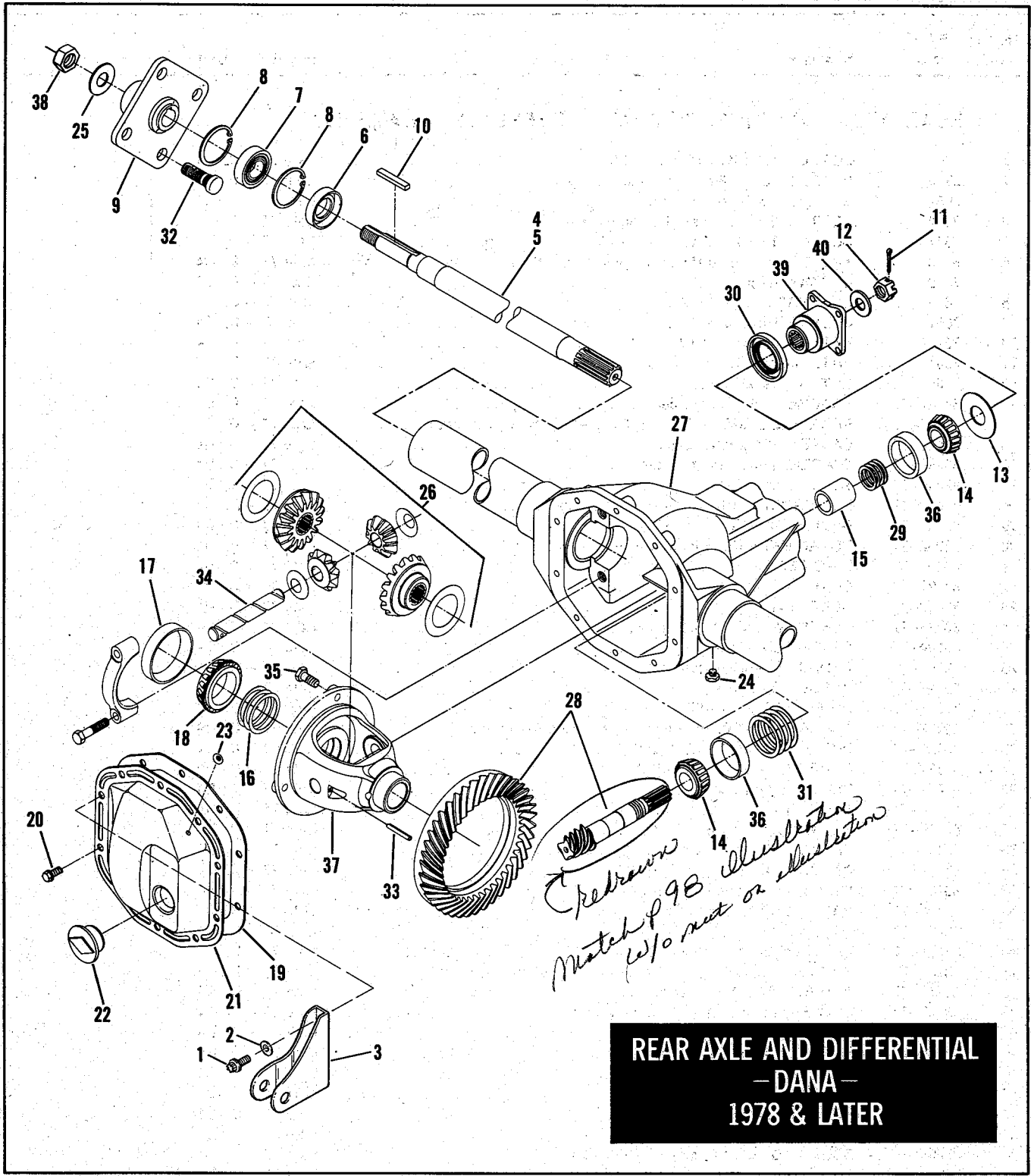
NAME

USED ON

REAR AXLE AND DIFFERENTIAL - PEERLESS - LATE 1977 G43B

1	376	DOWEL PIN, differential case (2)	Late 77 - D, D4
2	3940	BOLT, 5/16 x 7/8 hex. hd. (10)	Late 77 - D, D4
3	3957	BOLT, 3/8 x 3-3/8 hex. hd. (4)	Late 77 - C, D4
4	3962	BOLT, 1/2 x 1-1/2 hex. hd. (8)	Late 77 - D, D4
5	3977	BOLT, 7/16 x 1-1/2 hex. hd. (8)	Late 77 - D, D4
6	6573	WASHER PLATE, differential gear carrier (2)	Late 77 - D, D4
7	7049	LOCKWASHER, 1/2 (8)	Late 77 - D, D4
8	7054	LOCKWASHER, 7/16 (8)	Late 77 - D, D4
9	7061	LOCKWASHER, 3/8 (4)	Late 77 - D, D4
10	7216	RETAINER, axle nut (2)	Late 77 - D, D4
11	7661	NUT, hub to axle housing (8)	Late 77 - D, D4
12	7664	NUT, axle shaft (2)	Late 77 - D, D4
13	54524-77	BRACKET, shock absorber	Late 77 - D, D4
	82803-77	REAR AXLE AND DIFFERENTIAL ASSEMBLY, complete	Late 77 - D, D4
15	83044-77	GASKET, differential case	Late 77 - D, D4
16	83046-77	SPACER, pinion shaft - outer	Late 77 - D, D4
17	83049-77	SEAL, pinion shaft	Late 77 - D, D4
18	83052-77	RETAINING RING, pinion bearing - outer	Late 77 - D, D4
19	83054-77	BALL BEARING, pinion shaft (2)	Late 77 - D, D4
20	83056-77	RETAINING RING, pinion bearing - inner	Late 77 - D, D4
21	83090-77	RING GEAR	Late 77 - D, D4
22	83091-77	GEAR, axle (2)	Late 77 - D, D4
23	83092-77	GEAR, idler (2)	Late 77 - D, D4
24	83093-77	THRUST WASHER, idler gear (2)	Late 77 - D, D4
25	83094-77	SHAFT, idler gear	Late 77 - D, D4
26	83109-77	RADIAL BEARING, pinion shaft	Late 77 - D, D4
27	83117-77	NEEDLE BEARING, axle (2)	Late 77 - D, D4
28	83121-77	DIFFERENTIAL CASE, right	Late 77 - D, D4
29	83122-77	THRUST WASHER, axle gear (2); hub to axle bearing (2)	Late 77 - D, D4
30	83123-77	DIFFERENTIAL CASE - left	Late 77 - D, D4
31	83124-77	CARRIER, gear - differential	Late 77 - D, D4
32	83127-77	PIN, idler gear shaft	Late 77 - D, D4
33	83128-77	PLUG, fill	Late 77 - D, D4
34	83129-77	O-RING, axle housing (2)	Late 77 - D, D4
35	83130-77	PLATE, axle housing end (2)	Late 77 - D, D4
36	83136-77	NEEDLE BEARING, pinion shaft	Late 77 - D, D4
37	83138-77	SEAL, axle housing - outer (2)	Late 77 - D, D4
38	83148-77	BALL BEARING, axle (2)	Late 77 - D, D4
39	83151-77	KEY, hub (2)	Late 77 - D, D4
40	83153-77	WHEEL HUB, with studs (2)	Late 77 - D, D4
41	83155-77	THRUST WASHER, gear carrier - radial bearing (2)	Late 77 - D, D4
42	83156-77	RADIAL BEARING, gear carrier	Late 77 - D, D4
43	83157-77	WASHER, pinion bearing retaining ring - outer	Late 77 - D, D4
44	83200-77	PINION SHAFT	Late 77 - D, D4
45	83201-77	SPACER, pinion shaft - inner	Late 77 - D, D4
46	83202-77	AXLE, right	Late 77 - D, D4
47	83203-77	HOUSING, axle - right	Late 77 - D, D4
48	83204-77	HOUSING, axle - left	Late 77 - D, D4
49	83205-77	AXLE, shaft - left	Late 77 - D, D4
50	83206-77	COUPLING, transmission - pinion shaft	Late 77 - D, D4
51	83207-77	BOLT, pinion shaft	Late 77 - D, D4
52	83208-77	SPACER, pinion shaft transmission coupling	Late 77 - D, D4
53	83209-77	LOCKWASHER, pinion shaft bolt	Late 77 - D, D4
54	83210-77	WASHER, pinion bearing retaining ring - inner	Late 77 - D, D4

NOTE: Asterisk (*) indicates part is used for latest model year shown on cover.

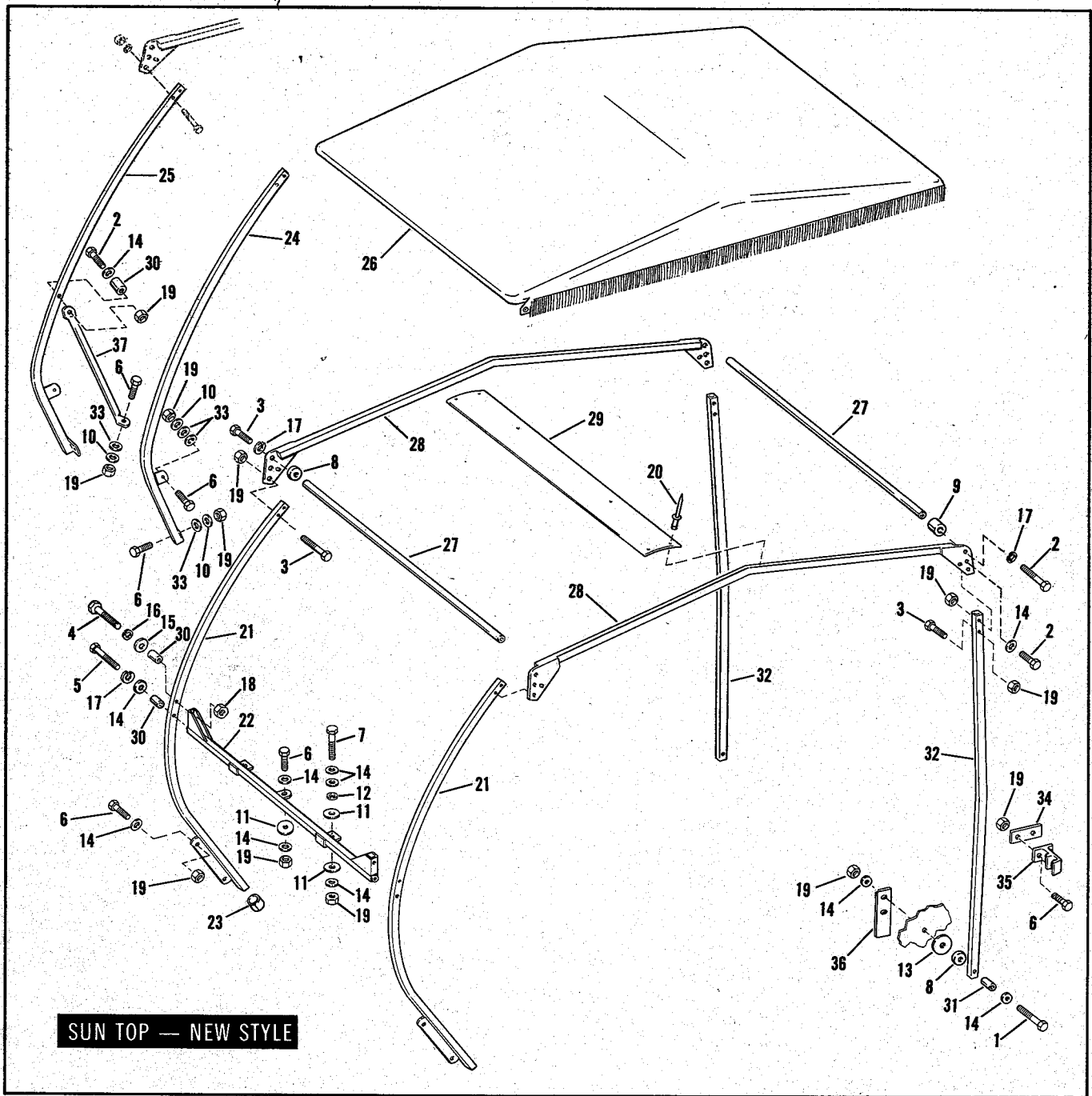


G43C

REAR AXLE AND DIFFERENTIAL - DANA - 1978 & LATER **G43C**

1	4733	SCREW, 5/16-18 x 1 Torx. hd.	78 to * - D, D4
2	6702	WASHER, 5/16 x 11/16 x 1/16.....	78 to * - D, D4
3	54524-73	MOUNTING BRACKET, shock absorber.....	78 to * - D, D4
4	82702-78	AXLE SHAFT, right.....	78 to * - D, D4
5	82703-78	AXLE SHAFT, left.....	78 to * - D, D4
6	82704-78	OIL SEAL, axle end (2).....	78 to * - D, D4
7	82705-78	BEARING, axle end (2).....	78 to * - D, D4
8	82706-78	RETAINING RING, axle bearing (4).....	78 to * - D, D4
9	82707-78	HUB, rear wheel (2).....	78 to * - D, D4
10	82708-78	KEY, hub (2).....	78 to * - D, D4
11	82712-78	COTTER PIN, pinion nut.....	78 to * - D, D4
12	82713-78	CASTLE NUT, pinion.....	78 to * - D, D4
13	82717-78	THRUST WASHER, pinion bearing.....	78 to * - D, D4
14	82723-78	BEARING CONE, pinion (2).....	78 to * - D, D4
15	82724-78	SPACER, pinion bearings.....	78 to * - D, D4
16	82728-78	SHIM, differential bearing - .003".....	78 to * - D, D4
	82729-78	SHIM, differential bearing - .005".....	78 to * - D, D4
	82730-78	SHIM, differential bearing - .010".....	78 to * - D, D4
	82731-78	SHIM, differential bearing - .030".....	78 to * - D, D4
17	82732-78	BEARING CUP, differential (2).....	78 to * - D, D4
18	82733-78	BEARING CONE, differential (2).....	78 to * - D, D4
19	82734-78	GASKET, axle housing cover.....	78 to * - D, D4
20	82735-78	BOLT, axle housing cover (8).....	78 to * - D, D4
21	82736-78	COVER, axle housing.....	78 to * - D, D4
22	82737-78	PLUG, axle housing cover.....	78 to * - D, D4
23	82749-78	BREATHER PLUG, axle housing cover.....	78 to * - D, D4
24	82750-78	PLUG, drain.....	78 to * - D, D4
25	82770-78	WASHER, axle nut (2).....	78 to * - D, D4
26	82772-78	DIFFERENTIAL GEAR SET.....	78 to * - D, D4
27	82807-78	REAR AXLE AND DIFFERENTIAL ASSEMBLY, complete.....	78 to * - D, D4
28	82948-73	MATCHED PINION AND GEAR.....	78 to * - D, D4
29	83032-63	SHIM, pinion bearing - front - .003".....	78 to * - D, D4
	83033-63	SHIM, pinion bearing - front - .005".....	78 to * - D, D4
	83034-63	SHIM, pinion bearing - front - .010".....	78 to * - D, D4
	83035-63	SHIM, pinion bearing - front - .030".....	78 to * - D, D4
30	83051-63	OIL SEAL, pinion.....	78 to * - D, D4
31	83072-63	SHIM, pinion bearing - rear - .003".....	78 to * - D, D4
	83073-63	SHIM, pinion bearing - rear - .005".....	78 to * - D, D4
	83074-63	SHIM, pinion bearing - rear - .010".....	78 to * - D, D4
32	83085-73	MOUNTING STUD, wheel hub (8).....	78 to * - D, D4
33	83103-73	ROLL PIN, differential case.....	78 to * - D, D4
34	83104-73	SHAFT, idler gear.....	78 to * - D, D4
35	83106-63A	BOLT, drive gear (4).....	78 to * - D, D4
36	83112-63A	BEARING CUP, pinion (2).....	78 to * - D, D4
37	83125-73	DIFFERENTIAL CARRIER ASSEMBLY, with gears.....	78 to * - D, D4
38	83131-63	NUT, axle shaft (2).....	78 to * - D, D4
39	83132-63A	PINION YOKE.....	78 to * - D, D4
40	83133-63A	WASHER, pinion nut (1).....	78 to * - D, D4

NOTE: Asterisk (*) indicates part is used for latest model year shown on cover.



G44A

INDEX PART
NO. NO.

NAME

USED ON

SUN TOP - OLD STYLE - PAGE 103 G44

89395-69	TOP ASSEMBLY, with fittings (less fringe) (used on correction)	63 to 73 - D, D4
89429-63	TOP COVERING (less fringe) (used on correction).....	63 to 73 - D, D4

SUN TOP - NEW STYLE - PAGE 105 G44A

1	2667	BOLT, 5/16-18 x 2 hex. hd. (2)	74 to * - D, D4
2	2818	BOLT, 5/16-18 x 1-1/2 hex. hd. (8 - D) (6 - D4)	74 to * - D, D4
3	2871W	BOLT, 5/16-18 x 1-1/4 hex. hd. (6)	74 to * - D, D4
4	2872W	BOLT, 1/4-20 x 1-1/2 hex. hd. (2)	Late 77 to * - D4
5	2887W	BOLT, 5/16-18 x 1-3/4 hex. hd. (2)	74 to * - D4
6	3987	BOLT, 5/16-18 x 3/4 hex. hd. (10 - D) (10 - D4)	74 to * - D, D4
7	4017	BOLT, 5/16-18 x 1 hex. hd. (2)	Late 77 to * - D4
8	5919	SPACER, 1/4 (4)	74 to * - D, D4
9	5947W	SPACER, 9/16 (2)	74 to * - D, D4
10	6229W	WASHER, 5/16 x 1-1/16 x 1/16 (6)	74 to * - D
11	6266	RUBBER WASHER, 5/16 x 7/8 x 1/8 (5)	74 to * - D4
12	6314W	WASHER, 5/16 x 9/16 x 1/32 (2)	Late 77 to * - D4
13	6678W	WASHER, 5/16 x 1-1/2 x 3/16 (2)	74 to * - D, D4
14	6702	WASHER, 5/16 x 11/16 x 1/16 (10 - D) (20 - D4)	74 to * - D, D4
15	6703	WASHER, 1/4 x 5/8 x 1/16 (2)	Late 77 to * - D4
16	7036	LOCKWASHER, 1/4 (2)	Late 77 to * - D4
17	7041	LOCKWASHER, 5/16 (4 - D) (6 - D4)	74 to * - D, D4
18	7688	NUT, 1/4-20 x 5/16 x 7/16	Late 77 to * - D4
19	7740	LOCKNUT, 5/16-18 x 1/4 x 1/2 hex. (22 - D) (21 - D4)	74 to * - D, D4
20	8483	POP RIVET, ridgeplate (4)	74 to * - D, D4
	89440-74	SUN TOP, complete	72 to * - D4
21	89441-74	SUPPORT TUBE, front (2)	74 to * - D4
22	89444-74	CROSSOVER TUBE, lower front	74 to * - D4
23	89447-74	CAP, front support tube (2)	74 to * - D4
	89450-74	SUN TOP, complete	72 to * - D
24	89451-74	SUPPORT TUBE, left front	74 to * - D
25	89456-74	SUPPORT TUBE, right front	74 to * - D
26	89457-74	COVER, sun top	74 to * - D, D4
27	89458-74	CROSSOVER TUBE, upper front & rear (2)	74 to * - D, D4
28	89461-74	SUPPORT TUBE, upper (2)	74 to * - D, D4
29	89464-74	RIDGEPLATE	74 to * - D, D4
30	89465-74	SPACER, front support tube, 7/8 (4)	74 to * - D, D4
31	89466-74	BUSHING, rear support tube pivot, 15/18 (2)	74 to * - D, D4
32	89467-74	SUPPORT TUBE, rear (2)	74 to * - D, D4
33	89470-74	RUBBER WASHER, front support tube (8)	74 to * - D
34	89472-74	BACKING PLATE, rear guide (2)	74 to * - D, D4
35	89474-74	GUIDE, rear support tube (2)	74 to * - D, D4
36	89475-74	PLATE (2)	67 to 73 - D, D4
37	89476-74	BRACE, front support tube to housing (2)	74 to * - D

NOTE: A

part is used for latest model year shown over.

AMF

Harley-Davidson

Milwaukee, Wisconsin 53201